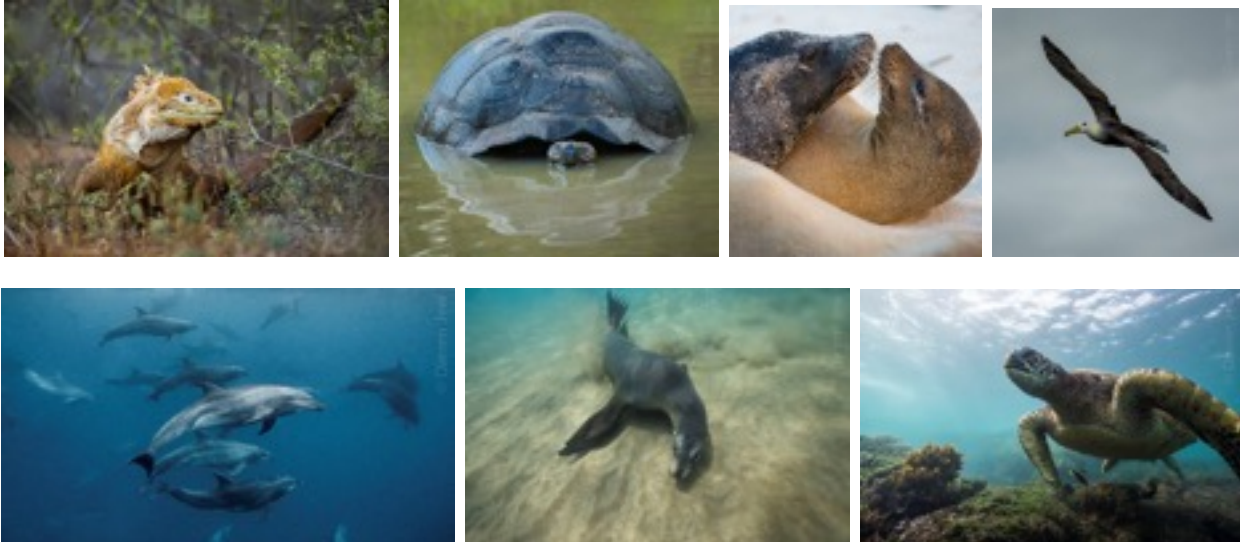


EXPLORING THE MAGNIFICENT GALAPAGOS ISLANDS IN DEPTH A PHOTOGRAPHIC JOURNEY WITH CANON MASTER PHOTOGRAPHER DARREN JEW

MAY 08TH – 17TH 2016



Here's your chance to join award-winning wildlife photographer Darren Jew on an amazing journey to one of the most spectacular photo-destinations on our Planet - the famed Galapagos Islands. Learn from this Canon Master and how he makes his award winning images.

Along with our top level expert local naturalist guides and accompanied with the expertise of our very own marine biologist Jennifer Prerau as well as plenty of tips from wildlife photographer & travel designer Emma Rowan-Kelly.

Straddling the equator in the far eastern Pacific, the remote archipelago that Darwin referred to as his *Enchanted Isles* is home to an incredible diversity of rare, exotic and friendly wildlife – both above and below the water. Famed for the incredible experience of snorkelling with extremely curious, friendly and playful sea-lions!

Relax with sun-baking Iguanas, be dazzled by Sally Lightfoot Crabs, ponder the passing of time with ancient Galapagos Tortoises, contemplate the bonds of the nesting Albatross, flirt with the Frigate birds, rock hop with the Blue Footed Boobies, swim with playful sea lions and tropical penguins, snorkel with spotted eagle rays and turtles.

The Galapagos offers you the chance to capture amazing images– from intimate wildlife portraits to spectacular scenic landscapes. Along with the chance to photograph amazing creatures, equatorial light falling on tortured volcanic landscapes, mangrove forests, stark cactus-studded slopes and deserted white-sand beaches also await you and your camera.

You'll learn professional nature photography techniques first hand from Darren as well as from Emma Rowan-Kelly. Suitable for photographers of all levels, the itinerary has been designed so you can enjoy maximum time ashore with amazing photo-opportunities.

Your expert local naturalist guide will bring the many islands and their wild inhabitants to life, whilst Darren and Emma support all your daily photography needs– helping create spectacular visual stories for you share! Don't miss your chance to join us in capturing the essence of the Galapagos.

TOUR DETAILS



Join our select group of just 16 passengers for an incredible 10 days sailing around the islands of this abundant archipelago. We've selected these special dates of **May 08th – May 17th 2016** as the animals are active and engaging at this time and the weather is not too hot, wet or rough! Most trips to the Galapagos only give you a much shorter stay in the islands with other time spent stopping over elsewhere before and after and otherwise in a large group waiting your turn - you'll see more with us in this dedicated itinerary.

We start with an arrival transfer from the airport and twin share accommodation in San Cristobal and enjoy a special visit to the incredible Kicker Rock for snorkelling. This truly is one of the most incredible sites in the Galapagos, it will be hard to leave here but so many more highlights will follow once we embark on our cruise!

CABIN OPTIONS & PRICES

All cabins have private bathrooms, hot/cold water and air-conditioning.

UPPER DECK: Suite with double bed: 9m² – 2 cabins only.



SUN DECK: Sun Deck with twin beds: 7m² – 2 cabins only



MAIN DECK: Main deck with double or twin beds: 7m² – 2 double & 2 twin cabins only.



\$5925USD per person double/twin share.

First to book gets the best cabin as we are assigning from the best cabins first in order of bookings received.

Additional Single Supplement applies (if you don't want to share)

A deposit of \$1500USD is required to secure your place. Guaranteed departure with a minimum of 8 passengers.

Includes – all meals; coffee and tea; drinking water; shared cabin accommodation with private bathrooms; snorkeling equipment (but we always strongly recommend to bring your own for best fit/reliability); airport to hotel and to ship group transfers on day of arrival/departure; hotel accommodation for 2 nights; day tour of Kicker Rock; transportation by our boutique ship (3.5-4 star); sightseeing with shore tours; services of an expert naturalist guide grade III (the highest standard) and accompanied by a 2nd local naturalist guide; Photographic mentoring/support from Darren & Emma; marine biology & snorkeling expertise from Jennifer.

Does not include – international or domestic airfares; alcoholic beverages & soft drinks; National Park Entry Fee/permits \$110USD paid in airports; wetsuits; transfers from the airport; gratuities. Please also note if fuel prices increase substantially some additional fuel levy may be payable.

We will do our best to share you up if you are traveling solo and want to avoid the single supplement but we cannot guarantee this if places are limited.

CONTACT

Please contact Emma Rowan-Kelly via Wentworth Travel to discuss this in greater depth and to secure your place. You can call +61 2 9301 9911 or email emma@wentworthtravel.com.au

We can also assist you with arranging flights, travel insurance, visas as well as any sightseeing or accommodation needs before or after your photo expedition. Emma has travelled extensively in this region, knows some great local operators and loves to create unique opportunities for your own explorations.



OUR ITINERARY

Day 1 – Sunday 08th May: San Cristobal Island: Meet and greet at the airport and receive a group transfer to our hotel (please see recommended flight times below). The rest of the day is at leisure to explore this town or relax.

Day 2 – Monday 09th May: San Cristobal Island: We enjoy a day trip to Kicker Rock, one of the highlights of the archipelago, brimming with marine life, it is an incredible treat to snorkel here.

Day 3 – Tuesday 10th May: San Cristobal Island: Transfer to our boat which will be our very comfortable home for the rest of the journey. We will also meet our expert local naturalist guide, one of only 7 guides in the Galapagos to hold such high qualifications and a truly incredible source of knowledge, as well as his assistant guide and the rest of the crew.

In the afternoon we travel to San Cristobal Island: Puerto Chino or Breeding Centre Jacinto Gordilo

Puerto Chino

Located (15.2 miles / 24.5 km) away from Puerto Baquerizo Moreno and a few miles from the Breeding Center Cerro Colorado, this walk takes approximately 30 mins to the beach.

Activities: Hiking, swimming, snorkeling

Type of Landing: Dry
Difficulty: Moderate / difficult
Highlights: White sandy beach, marine birds, snorkeling

“Jacinto Gordillo” Breeding Center

This is a new visitor site in the northeast part of San Cristobal Island and can now be reached in roughly one hour by road from Puerto Baquerizo Moreno. In the Breeding Center, you will be able to admire the hatchling turtles from their birth until they are 120 days old when the grown turtles are taken to their natural habit.

Highlights: Giant tortoises in captivity, land and sea birds, blue-footed boobies, turtle hatchlings, Snorkeling with sea lions
Activities: Short hike (0,6 mi / 1Km)
Difficulty: Easy / moderate
Type of Landing: Dry

Day 4 – Wednesday 11th May: Santa Fe Island

Santa Fe (Barrington) is home to the small picturesque bay and anchorage on the island’s northeast coast. The bay has two visitor trails, one leading to a scenic viewpoint atop a cliff, and the other spanning from a small beach to a tall prickly pear cactus forest.

Highlights: Land iguanas, giant tunas
Activities: Hiking
Type of Landing: Dry landing
Difficulty: Moderate

Wed pm: South Plaza Island

In the morning, you will head to South Plaza Island. This small island with steep cliffs was formed by rising lava and is now covered by Opuntia cacti. It is also home to one of the largest sea lion colonies as well as colorful yellow and red land iguanas. The most characteristic plant is Sesuvium. During the rainy season its color is a greenish to yellowish tone and in the dry season (end of June through January) a bright red.

Highlights: Land iguanas, sea lion colony, Audubon's shearwaters, swallow-tailed gulls, Nazca boobies, landscape with cliffs
Activities: Hike (1.5 miles / 2 ½ km)
Type of Landing: Dry landing
Difficulty: Moderate

Day 5 – Thursday 12th May: Santa Cruz Island, Charles Darwin Station

The Charles Darwin Research Station is home to turtles ranging from 3-inches (new hatchlings) to 4-feet long. Subspecies of turtles interact with one another and many of the older turtles are accustomed to humans stretching out their heads for a photo opportunity. The babies are kept until they are about four years old and strong enough to survive on their own.

Highlights: Giant tortoises in captivity
Activities: Walking
Type of Landing: Dry landing
Difficulty: Easy

Thurs pm: Santa Cruz Island: Los Gemelos (Twin Craters)

Los Gemelos, or the Twin Craters, are located opposite each other on both sides of the road leading from Puerto Ayora to Baltra. The name is only figurative; not real craters, these formations were created by the collapse of surface material in underground fissures and chambers. The view is breathtaking.

Highlights: Pit craters, Scalesia forest
Activities: Short hiking
Type of Landing: Dry landing
Difficulty: Moderate

Day 6 – Friday 13th May: Isabela Island: Sierra Negra Volcano

The Sierra Negra Volcano boasts the largest basaltic caldera in Galapagos at 9 x 10 km. The site offers impressive views and the opportunity to observe up to 7 species of finch and a rich display of vegetation. The north side of the caldera provides evidence of its most recent volcanic activity in 2005.

Highlights: Basaltic caldera, stunning views, finches
Activities: Hiking, horseback riding, walking
Type of Landing: Dry landing

Difficulty: Moderate

Fri pm: Isabela Island: The Wetlands, Wall of Tears, Tortoise Breeding Station (Puerto Villamil)

The Wetlands of Isabela Island are located just outside of Puerto Villamil. The Wetlands consist of lagoons, swamps, and mangroves and are home to a variety of unique bird species such as common stilts, whimbrels, white-cheeked pintails, and gallinules. The Wetlands is visited on foot via a windy path through the swamps.

Highlights: Giant mangroves, shore birds

Activities: Hiking

Type of Landing: Dry landing

Difficulty: Easy

Day 7 – Saturday 14th May: Isabela Island: Moreno Point

Moreno Point is located near Elizabeth Bay on the west coast of Isabela Island. The plethora of birds seen during a dinghy ride along the striking rocky shores or a hike along path through lava rock leading to tide pools and mangroves create a birdwatcher's delight. In the tide pools, green sea turtles or white-tip sharks can be spotted.

Highlights: Flamingos, gallinules, pintail ducks, turtles, white-tip reef sharks.

Activities: Snorkeling, dinghy ride & hike (1.2miles/2km)

Type of Landing: Dry landing

Difficulty: Moderate / difficult

Sat pm: Isabela Island: Tagus Cove

Tagus Cove is located across from Fernandina Island near the Bolivar Channel dividing the two islands. This spot has been frequented by ships since the 1800s using the area as an anchorage site. Trails winding by Lake Darwin up to a ridge display wonderful views. Punta Tortuga, just north of Tagus Cove, is another lovely beach surrounded by mangroves.

Highlights: Penguins, flightless cormorants, Darwin Volcano & Lake Darwin

Activities: Long hike, snorkeling, dinghy ride

Type of Landing: Dry landing

Difficulty: Moderate / difficult

Day 8 – Sunday 15th May: Fernandina Island: Espinoza Point

No foreign species have ever invaded Fernandina Island, and therefore it is one of the world's most pristine island ecosystems. The volcano "La Cumbre" dominates the landscape with lava fields reaching the ocean. The island's highlight features the flightless cormorant nesting site. This area provides a great opportunity to see the Galapagos hawk.

Highlights: Flightless cormorant, marine iguanas, 'a'a lava, sea lions, penguins, "La Cumbre" active volcano

Activities: Hike (1.2 miles/2 km)

Type of Landing: Dry and slippery at low tide

Difficulty: Moderate

Sun pm: Isabela Island: Vicente Roca Point

Located on the northwestern coast of the island and comprised of two separate coves, this site is a large bay with spectacular sea life. Seahorses, sea turtles, and the strange yet fascinating Mola mola (sunfish) may be spotted here. This bay is great for diving and snorkeling.

Highlights: Penguins, blue-footed boobies, terns, Nazca boobies, sea lions. Snorkeling - sea turtles, rays and puffer fish.

Activities: Snorkeling & dinghy ride

Type of Landing: No landing

Difficulty: Easy / moderate

Day 9 – Monday 16th May: Santiago Island: Espumilla Beach or Bucanero Cove

Espumilla Beach is a popular place for marine iguanas and Sally Lightfoot crabs. The crabs attract the hunting herons performing the dance of predator and prey. With an abundance of marine life including octopi, moray eels, and sharks, snorkeling is highly recommended.

Highlights: Snorkeling

Activities: Snorkeling and swimming

Type of Landing: Wet landing

Difficulty: Easy

Monday pm: Bartholomew Island

Home of the famous Pinnacle Rock, Bartholomew consists of an extinct volcano with a variety of red, orange, black and even green volcanic formations. A trail of stairs leads to the summit of the volcano, boasting one of the best views of the islands. The beach is perfect for snorkeling and possible sightings of the Galapagos penguin.

Highlights: Pinnacle rock, panoramic view, moonlike landscape, penguins, pioneer plants, lava cactus. Snorkeling - penguins, reef sharks, rays, and great colorful fish.
Activities: Dinghy ride, snorkeling & hiking (1.2 miles/ 2 km)
Type of Landing: Dry and wet landings
Difficulty: Moderate/difficult. Walk up to the top of volcano 114 meters, 375 wooden steps

Day 10 – Tuesday 17th May: North Seymour Island

Galapagos sea lions, blue-footed boobies and magnificent frigate birds are abundant on North Seymour Island. The island was formed by a series of submarine lava containing layers of sediment that were uplifted by tectonic activity. The island is characterized by its arid vegetation zone.

Highlights: Land & marine iguanas, frigate birds, blue-footed boobies, sea lions.
Snorkeling - rays, reef shark, fish, garden eels.
Activities: Dinghy ride & hiking (1.5 miles / 2.5 km)
Type of Landing: Dry landing
Difficulty: Moderate / difficult

Tues pm: Baltra Island

Transfer to Baltra and we will be taken to the airport for our onward flights home (recommended flight times are advised below).

ABOUT US



DARREN JEW

Australia's Darren Jew has photographed the planet's landscapes and wildlife from Antarctica to Zambia over his 30-year career – on mountain peaks, desert plains and beneath the Ocean's surface.

After photography studies at the Queensland College of Art and work in darkrooms and commercial studios, Darren found his vocation at the Queensland Parks and Wildlife Service, where his photographic skill found harmony with his profound love of nature. The subsequent two decades have seen him continue pursue his passion for capturing and sharing the natural World, producing sought-after nature, travel and scientific images both above and below the water, exhibiting, undertaking commercial and magazine commissions and leading

photography tours to the World's great wildlife, landscape and marine destinations, including to Antarctica and the sub-Antarctic, across Africa, around Australia and into the Pacific.

Darren is the author of two books: "AUSTRALIA – reef, rainforest, red heart" and the Limited Edition title: Far&Wild SOUTH. His images regularly appear in many magazines and books, he exhibits around Australia and his work is used by conservation organisations world-wide. His client list is extensive and includes Australian Geographic; Sport Diver; National Geographic; CSIRO; Tourism Australia; Tourism Queensland; Greenpeace and WWF.

Darren is one of only 12 photographers acknowledged as a Canon Master and starring in the new Canon documentary series 'Tales by Light' focusing on a select number of the world's best photographers premiering on National Geographic Channel on 24 May 2015.

Darren's unique vision has seen him named Canon/AIPP Australian Science, Environment and Nature Photographer of the Year in 2007, 2009, 2010, 2012 & 2013.

www.darrenjew.com



EMMA ROWAN-KELLY

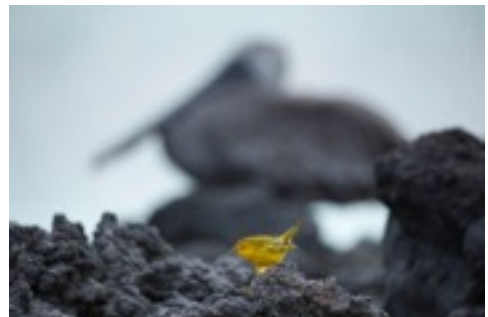
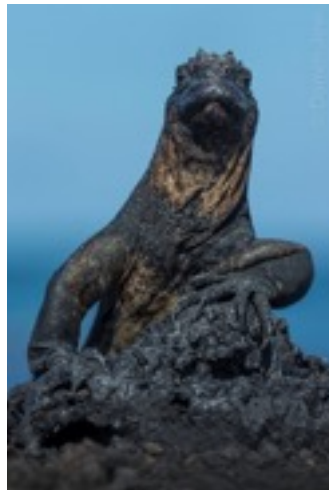
Sydney-based photographer and travel professional Emma Rowan-Kelly has a passion to capture all aspects of life on earth.

Through her photography Emma seeks-out moments that create a connection between her subject and the viewer, with an aim of encouraging empathy for the environment and for all those that share it.

Emma has journeyed to over 90 countries and territories during the past 15 years, including the high Arctic, Sub-Antarctic, Iran, Bhutan, Colombia, Tibet, Galapagos Islands, Cambodia, Cuba & Nepal – locations that attract the curious explorer, fascinated by those paths less travelled.

Her best-selling exhibition in 2011 “Innocent Arctic” was sponsored by National Geographic / Lindblad Expeditions and Wentworth Travel with 35% of profits donated to WWF Adopt a Polar Bear program. Emma has both a fine arts and travel profession background and is a former student of both the Sydney Institute of Photography and the National Art School. She is leading photography tours to Antarctica, the high Arctic as well as other destinations in collaboration with Darren Jew. Emma is also working on her next solo exhibition, which will feature Daguerreotypes, the oldest form of photography.

You can see more about her on www.emmarowankelly.com or like her page on Facebook Emma Rowan-Kelly Photography.



RECOMMENDED FLIGHTS FOR GROUP TRANSFERS

Please speak with us about arranging flights as it is best to include these flights on your international ticket if possible to receive a greater luggage allowance. You can start from Quito or Guayaquil, but if you start from Quito you will transit Guayaquil on the way. You will need an overnight in Quito or Guayaquil as your international flights will not connect. We can also recommend hotels here and arrange transfers, sightseeing and hotels. If you suffer from altitude problems we recommend staying in Guayaquil.

08 MAY 2016

XL 1561 QUITO TO GUAYAQUIL

1035 1130

XL 1561 GUAYAQUIL TO SAN CRISTOBAL

1210 1310

17 MAY 2016

XL 1552 BALTRA TO GUAYAQUIL

1245 1545

XL 1552 GUAYAQUIL TO QUITO

1625 1720

PUBLIC AREAS

Our vessel is comfortable but not luxurious. We are not taking the full numbers to allow extra space for cameras and laptops – so that we can do processing of our photos after our explorations each day.

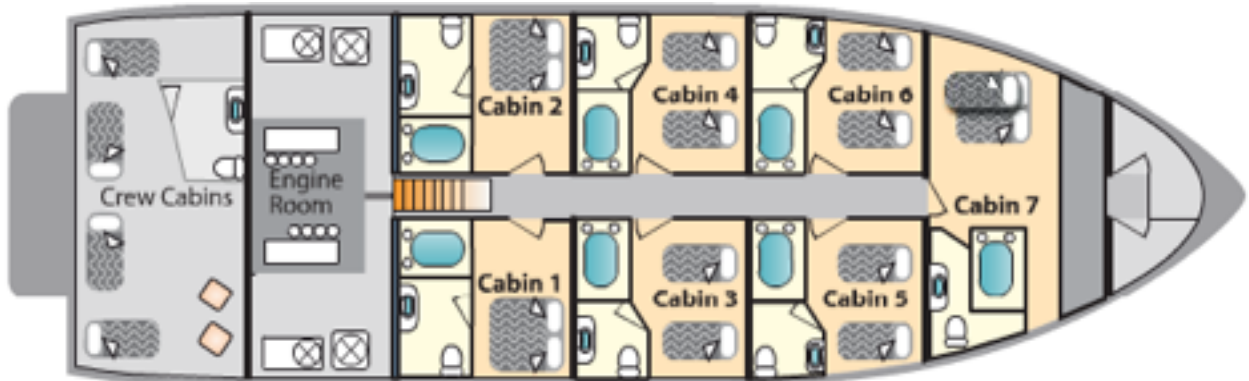


TECHNICAL SPECIFICATIONS

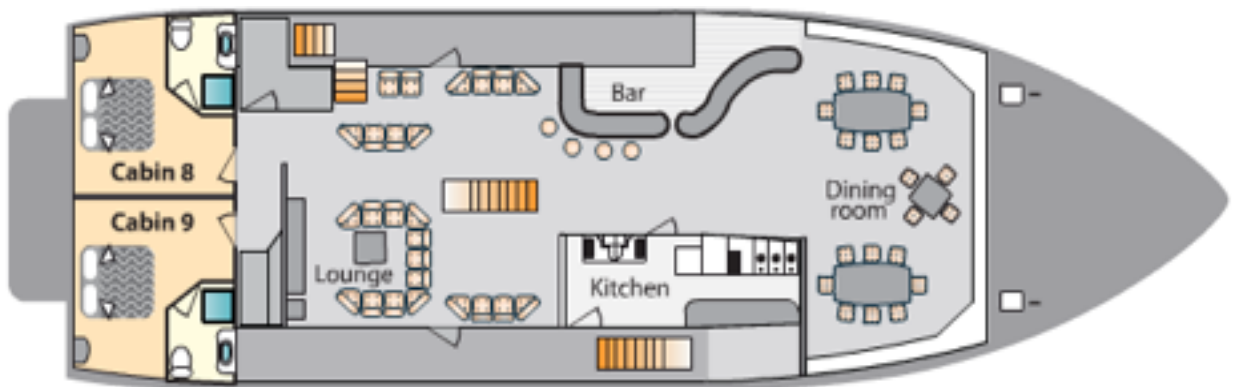
Year of construction:	2000
Type:	Mid-Range Expedition Vessel
Length:	88 feet (27 m)
Beam:	22 feet (7 m)
Draft:	6 feet (2 m)
Gross tonnage:	171 tons
Capacity:	20 passengers
Accommodation:	<ul style="list-style-type: none"> ∞ Main Deck: 4 Double cabins (twin/double beds) (75-78ft² / 7m²) ∞ Upper Deck: 2 Suites (double bed) (100ft² / 9m²) ∞ Sun Deck: 2 Double cabins (twin beds) (74 ft² / 7m²) ∞ All cabins with private bathrooms, hot water and air-conditioning
Crew:	<ul style="list-style-type: none"> ∞ Captain ∞ 2 Bilingual naturalist Galapagos National Park guides ∞ 8 other crew + Darren, Emma & Jennifer. (14 of us to look after 15 of you!)
Safety & Navigation:	<ul style="list-style-type: none"> ∞ All equipment meets / exceeds the international safety standards ∞ Life vests ∞ GPS ∞ Sonar ∞ Naval radars ∞ Fire detection and prevention systems.

DECK PLANS

MAIN DECK



UPPER DECK



SUN DECK

